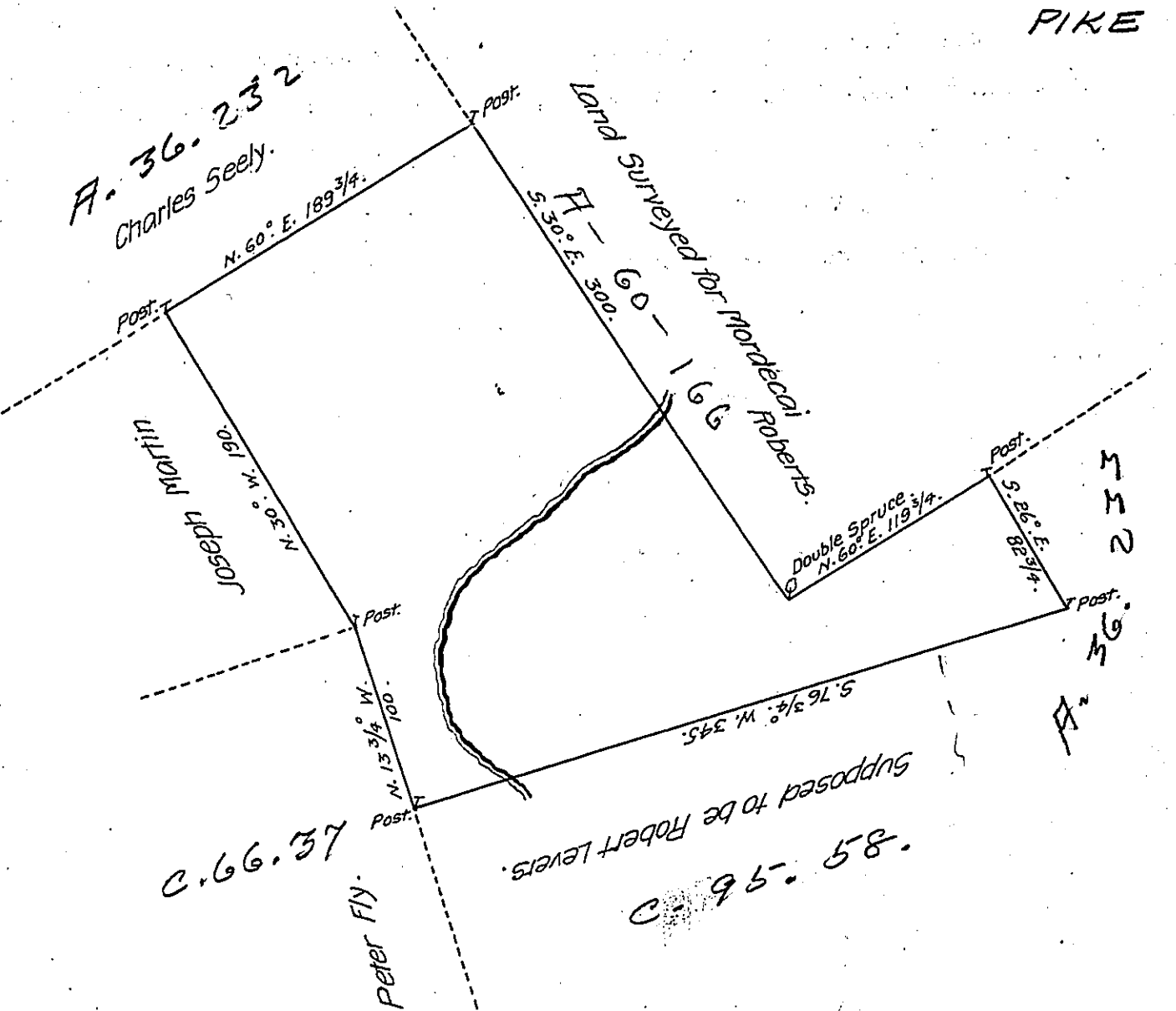


FORM NO. 1.

ught and
er, which he the
ayne and Pitre
1837, together
of said returns as
And that he is
es in the Surveyor
Torrey. —



By virtue of a Warrant dated 31st December 1792 Surveyed 6th November 1794 to Arms
 Ware the above described tract of land situate on a branch of Bushy Bridge Creek in
 the County of Northampton, Containing four hundred and fourteen acres seventy nine
 perches and the allowance of six per Cent &c.

Signed P^r Geo. Palmer D.S.

To Daniel Brodhead Esq^r

Surveyor General

February 21st 1852

Lafayette Westbrook D. S. of Pitre County.

IN TESTIMONY that the above is a copy of the original remaining on file in
 the Department of Internal Affairs of Pennsylvania, made
 conformably to an Act of Assembly approved the 16th day of
 February 1833, I have hereunto set my hand and caused
 the Seal of said Department to be affixed at Harrisburg,
 this sixteenth day of August 1907.

Henry Houch
 Secretary of Internal Affairs.